



KEY

11

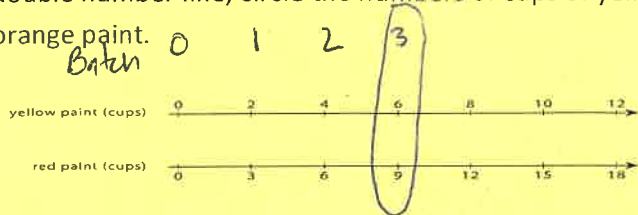
NAME

DATE

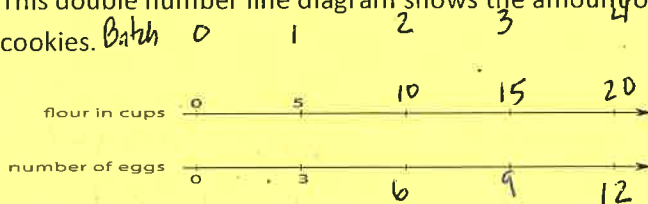
PERIOD

Unit 2, Lesson 6: Practice Problems

1. A particular shade of orange paint has 2 cups of yellow paint for every 3 cups of red paint. On the double number line, circle the numbers of cups of yellow and red paint needed for 3 batches of orange paint.



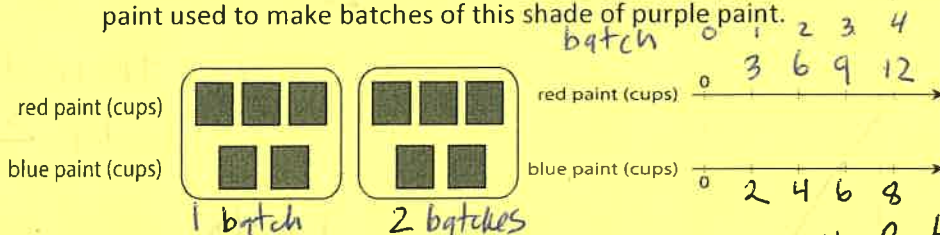
2. This double number line diagram shows the amount of flour and eggs needed for 1 batch of cookies.



- 3.
- Complete the diagram to show the amount of flour and eggs needed for 2, 3, and 4 batches of cookies.
 - What is the ratio of cups of flour to eggs? 5 Flour : 3 Eggs (cups)
 - How much flour and how many eggs are used in 4 batches of cookies? 20 cups flour 12 eggs
 - How much flour is used with 6 eggs? 10 cups flour
 - How many eggs are used with 15 cups of flour? 9 Eggs

4. Here is a representation showing the amount of red and blue paint that make 2 batches of purple paint.

- a. On the double number line, label the tick marks to represent amounts of red and blue paint used to make batches of this shade of purple paint.



- How many batches are made with 12 cups of red paint? 4 Batches
- How many batches are made with 6 cups of blue paint? 3 Batches



NAME _____

DATE _____

PERIOD _____

5. Diego estimates that there will need to be 3 pizzas for every 7 kids at his party. Select all the statements that express this ratio.

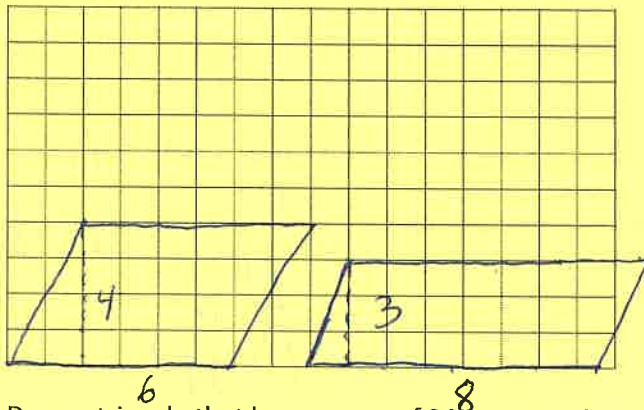
3P : 7K
7K : 3P

- A. The ratio of kids to pizzas is 7:3.
- B. The ratio of pizzas to kids is 3 to 7.
- C. The ratio of kids to pizzas is 3:7. *NO*
- D. The ratio of pizzas to kids is 7 to 3. *NO*
- E. For every 7 kids there need to be 3 pizzas. *Yes*

15

6.

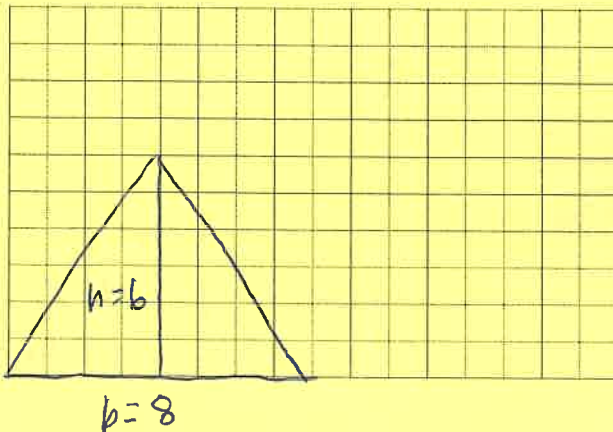
a. Draw a parallelogram that is not a rectangle that has an area of 24 square units. Explain or show how you know the area is 24 square units.



	base	height
1	4	24
2	6	12
3	8	8
4	12	6

1

b. Draw a triangle that has an area of 24 square units. Explain or show how you know the area is 24 square units.



$$\frac{1}{2} b \cdot h = 24 \text{ sq}^2$$

48 then divide by 2

- 1 • 48
 - 2 • 24
 - 3 • 16
 - 4 • 12
 - 6 • 8
- any combination